



THALIAN ASSOCIATION
COMMUNITY THEATRE
AND UNCW'S KENAN
AUDITORIUM PRESENT

GODSPELL

DIRECTED BY
CHANDLER DAVIS

CHOREOGRAPHED BY
TIMOTHY A MILLS

VOCAL DIRECTION BY
LINDA MARKAS

MUSIC DIRECTION BY
DENICE HOPPER

CONCEIVED BY
JOHN MICHAEL TEBELAK
MUSIC AND NEW LYRICS
BY **STEPHEN SCHWARTZ**



Great Community Theatre Since 1788

THANKS TO YOU!

Thalian Association, the Official Community Theatre of NC has been the cultural foundation of the Cape Fear region for 236 years and is a major attraction for visitors and new area residents.

1788 Founded to provide income for Innes Academy, the 1st free school in NC, the oldest community theatre group in the US

1851 The Association sends a memorial stone to the Washington Monument, still there today on Landing 23

1855-1858 builds a combination civic center & theatre with the City Of Wilmington, Thalian Hall

1979 Thalian Youth Theatre begins

1994 Assumes management of the Hannah Block Historic USO Building/Community Arts Center for the City

1995 Originated Orange Street ArtsFest to support visual arts in the Cape Fear, promote downtown Wilmington & the HBHUSO/CAC

2007 Designated the Official Community Theatre of NC

Did You Know?

Arts are a huge economic driver in Wilmington, attracting visitors and new residents as well. The 2023 Arts & Economic Prosperity Survey announced that the non-profit arts & culture industry in New Hanover County generated \$75,595,580 in annual economic activity, 11.4 million in local, state, & federal revenues with the equivalent of 1285 full time jobs.

2023-2024 Highlights:

- Main Stage Thalian Hall & Youth Theatre Season presenting 10 productions with 54 performances
- 7 free daytime Youth Theatre performances attended by 980 students from GLOW, DC Virgo Preparatory Academy, Wilmington School of the Arts, or tri-county schools with a stated need
- 3 Sensory Friendly Youth Theatre Performances were attended by 548 SDA students from New Hanover, Brunswick, and Pender Counties
- Auditions were open to everyone and there is never a fee to be cast in a show
- DreamWorks Madagascar the Musical Adventure Jr. was a rookie show, only for children never cast in a youth theatre show
- Free tickets for all public performances of Madagascar on a first come basis
- Big Buddy Families invited to all Youth Theatre and Main Stage Thalian Hall dress rehearsals
- Teachers Resources for all Youth Theatre productions to support classroom learning
- Presented the 2024 NC Azalea Festival Youth Art Contest
- Attendance and community use of the Community Arts Center returned to pre-pandemic level with free rehearsal & meeting space for non-profit organizations
- 687 children ages 3 - 17 attended Creative Arts Camp, the largest visual & performing arts camp in SENC
- 75,956 people participated or saw a show, attended a special event, class, or Creative Arts Camp at the Community Arts Center

Creative Team

Chandler Davis (Director/Set Design) Godspell is one of Chandler's favorite shows going all the way back to her high school performance back in 2001. She's so pleased you came to see it and she thanks you for supporting live theatre. Previous Wilmington directing credits include: Big Fish, The 39 Steps, Mister Roberts, The Bridges of Madison County, Pippin, Elf, Little Miss Sunshine, Company, Something Rotten, and Beauty and the Beast. She sends all of her love to her Simon-Davis family members.

Linda Carlisle Markas (Vocal Director) has enjoyed many wonderful productions with the Thalian Association, including 2023's The Wedding Singer for which she is honored to have won "Best Music Director". Her day jobs include owner of Dancing Lion Music Works where she teaches piano and as an announcer at public radio station WHQR's classical music station.

Mark Hayes (Set Construction) is a Wilmington native who has enjoyed building sets for Thalian Association since 2016. You may have seen his handiwork in the recent Thalian Association productions, Little Shop of Horrors, Something Rotten, Cinderella, Sleuth, Wedding Singer, Beauty and the Beast, and SpongeBob. Thanks to Becky, Eddie, Julie, Maggie and Teddy.

Samantha Chappell (Production Stage Manager) has been involved with Thalian Association since 2014 first, as Susan's intern, then turned full time from Sept 2014-Jan 2022; as well as an actor, stage manager, Youth and Main Stage director. This is her third summer Stage Managing the summer show at Kenan and she loves working alongside her best friend Chandler on any and all creative projects-mostly all. Shout out to her amazing wife Leah for parenting their twins so she can play with their friends.

Ethan Golden (Sound Designer) is an audio engineer, who began to experiment with mixing and producing music in a humble bedroom studio as a teenager. After producing live broadcasts for WUAG, UNCG's student radio station, he spent a year working at The Carolina Theatre of Greensboro. This allowed him to gain experience mixing a variety of performances. After a recent move back to Wilmington, he utilized these skills to design the sound for Nickelodeon's The SpongeBob Musical (Thalian Association). He is excited for the opportunity to continue his work with the Association, and take part in the production of Godspell!



Andrew Fisher (Lighting Designer) has been a lighting designer for over 20 years, bringing his expertise to a wide range of productions including plays, musicals, operas, and events. He is the resident Lighting Designer for Gulfshore Opera Company, where he recently designed the lighting for Turandot. Andrew also serves as the resident designer for Carolina Voices, where he has wrapped lighting designs for Songs from the Emerald City and the 2023 Singing Christmas Tree. His recent regional work includes lighting designs for Bonnie & Clyde: The Musical, Steel Magnolias, and various music festivals across the Carolinas. Andrew is thrilled to be working with the Thalian Association and always looks forward to the quality they bring to their productions and their commitment to growth.



Timothy A Mills (Choreographer) has been choreographing for Thalian Association since 2016. Past credits include Rock of Ages, Frog and Toad, Damn Yankees, Godspell 2018, Cinderella, The Wedding Singer, and Freaky Friday. Thank you for seeing the show!

Denice Hopper (Music Director) has enjoyed Music Directing for the Thalian Association since 2007. She graduated from Belmont University with a Bachelors of Music in Commercial Piano Performance. Denice is a Performing Artist, and a Certified Early Childhood Music and Movement Educator. Denice serves as a Worship Arts Coordinator in a local church and loves to spend time with her daughter Sommer shopping and going to the beach.

Direction.....	Chandler Davis
Choreography.....	Timothy A Mills
Vocal Direction.....	Linda Markas
Music Direction.....	Denice Hopper
Costume Design.....	Chandler Davis
Lighting Design.....	Andrew Fisher
Sound Design.....	Ethan Golden
Set Design.....	Chandler Davis
Set Construction.....	Mark Hayes
Production Stage Manager	Sam Chappell
Executive Director.....	Susan Habas
Artistic Director.....	Chandler Davis
Production Manager.....	Logan Hayes
Operations Coordinator.....	Stacie Smith



MEET THE CAST

Georgie Davis (Judas/John the Baptist) is thrilled to be back onstage with Thalian Association. Her TA credits include Rodger and Hammerstein's Cinderella (Cinderella), Joseph and the Amazing Technicolor Dreamcoat (Narrator), Company (Amy), Elf (Deb), Beehive, and Matilda. She won a Wilmington Theatre Award for Best Actress in a Musical for Panache Theatrical Productions' Lizzie (Lizzie). Georgie is a proud pediatric nurse at NHHNRC Betty Cameron Women's & Children's Hospital. She would like to thank the cast, crew, and team, with a special shoutout to the incomparable Mrs. Davis. Lucky to love you, wifey!



Anna Harris (Ensemble) is thrilled to be in this sensational show with such a talented cast! Last seen on stage in Thalian's Elf the Musical (Ensemble) and A Chorus Line (Ensemble). Anna has always enjoyed performing and is so grateful to Chandler for this opportunity! She would like to thank her friends and family, especially Brandon and her pups, for their love and support. Enjoy the show and remember – YOU ARE THE LIGHT OF THE WORLD!

Natalie Hopson Feinberg (Dance Captain/Ensemble) is thrilled to be here! Recent credits: Ragtime [Opera House]; Beauty and the Beast (Babette), Something Rotten (Dance Captain), Company (Jenny), and Tuck Everlasting (Choreographer) [Thalian]. Thanks to Chandler and Tim, this whole team, and her family and friends for their love and support! "To love another person is to see the face of God." (Victor Hugo)
@natalierosetotheoccasion



Susie Lukens (Ensemble) is excited to be a part of this amazing production! Godspell is a Lukens household staple, and performing "Day by Day" is a dream fulfilled. She has performed with Thalian Association in Beauty & the Beast, The Wedding Singer (Julia), Cinderella, Something Rotten, Company (April), and Elf! Take 2 and 3 as well as teaching with TACT Youth programs. She is thankful for her friends and family who support her and teach her to keep having fun!



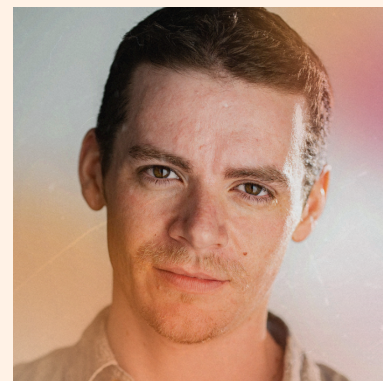
Rebecca Deese (Ensemble) is a seventeen-year-old high school senior dual enrolled at CFCC. She has been doing shows with Thalian for ten years and performing theatre her whole life. Most recent credits include Regina George (Mean Girls), Imogene Herdman (The Best Christmas Pageant Ever), Lucy (13), and Dinah Lord (The Philadelphia Story). Big thanks to Chandler Davis for this opportunity!

Nat Pressley (Ensemble) is thrilled to be participating in another Thalian Association production! They were seen in Thalian's Cinderella last Spring, and other local productions such as Newsies, Man of La Mancha, and The Producers! Big thanks to Chandler, Linda, Denice, and Tim for making this show so fun and supportive!



Zach Kreis (Ensemble) is excited to return to the stage after 9 long years away! A native of Upstate NY, he was in a variety of shows as a part of his local community and in college. Previous credits include Harry Houdini (Ragtime), Prof. Callahan (Legally Blonde), and Benny Southstreet (Guys and Dolls). He would like to thank his grandparents, family, and loving partner Ally for all the support they provide him each and every day!

Jacob Jordan (Ensemble) has always had an interest in film and music. While editing videos and learning about filmmaking, he became keen on acting and started training for TV and film. He desired to stretch his acting even further and is excited and grateful to make his debut theatre performance in Godspell.



Yeavonne Cox (Ensemble) is a Marine veteran and Cape Fear Chorale member who absolutely loves any chance to perform. Being a part of Godspell is fulfilling a childhood dream, and she could not have asked for a more loving and supporting cast and team to do it with. Her recent credits include The Owner in Windows (Big Dawg Productions), Sarita Cash in Scotopia: Short Plays to Help You See in The Dark (MoB), Wanda in Beehive the Musical (TACT), Harlem Ensemble/Haitian Immigrant in Ragtime (OHTC), Ensemble/Tina Turner Impersonator in The Wedding Singer (TACT), Sonya/LaShonda/Grandma /Auntie in Wilmington Reconstructed (MoB), and Ensemble in Kinky Boots (OHTC). Yeavonne has also appeared in Divine Divas (TACT), the Sneads Ferry Shrimp Festival, and in cabarets at Dell Webb and Compass Point.



Mark Deese (Ensemble) is excited to get back into theatre as Godspell is the first show he has auditioned for since he played Chip in Panache's 25th Annual Putnam County Spelling Bee in 2019. He is a stage director and actor who most recently directed A Christmas Story the Musical and Tuck Everlasting for Thalian Association. It has been almost 17 years since he was last in Godspell and he is thrilled to be joined onstage by his daughter Rebecca this time around. He would like to thank Chandler and the production team for this opportunity, his wife Katie, and daughters Rebecca and Danielle for their support. Enjoy the show!!!

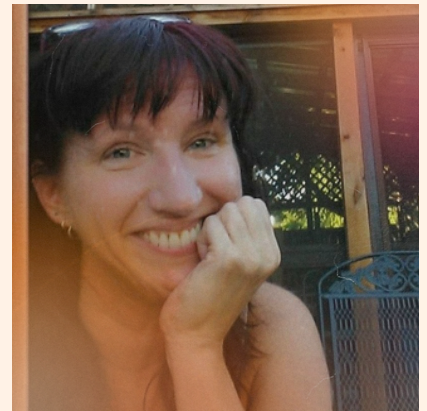


Candi Johnson Terry (Ensemble) is thrilled to be coming home to the Kenan Auditorium stage, where her Wilmington theatre debut began with Thalian Association's Guys and Dolls! After a brief hiatus, she has been fortunate to rejoin this incredible community of artists, both on stage and off. She was recently spotted in productions of Nickelodeon's The SpongeBob Musical and Elf the Musical (alongside her partner in crime, Stephen Terry! <3). Thank you all for supporting the arts, and enjoy the show!



Kimberly Brumsey (Ensemble) is thrilled to be a part of this talented cast and work with this amazing creative team! Some favorite roles include Linda Lou in The Best Little Whorehouse in Texas (Thalian Association), a Hot Box Girl in Guys and Dolls (Thalian Association), an Ancestor in The Addams Family (Thalian Association), and ensemble in The Wedding Singer (Thalian Association). She would like to thank her husband, Ben, daughter, Brighton, family and friends for all of their love and support.

Kathy Enlow (Ensemble) is absolutely thrilled to be in Godspell. She first saw this show when she was about 10 years old when it was directed by the show's original creator John-Michael Tebelak and has loved it ever since!!! A big thanks to the cast and creative team and a special thanks and love to Randall, her biggest supporter and bestest everything.

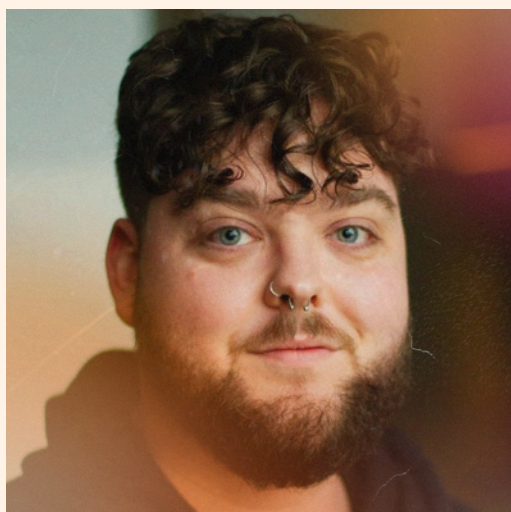


Dianne Marchese (Ensemble) is excited to be back on stage again. Previous roles were Mr. Mushnik (Little Shop of Horrors), Mazeppa (Gypsy), Justice (Rock of Ages), Cannoli Elf (Santaland Diaries), and ensemble in several other productions. This is her third time performing in Godspell.

Fia Binford (Ensemble) is hot off the heels of her Wilmington Community Theatre double debut in Cape Fear Shakespeare's Romeo & Juliet and Much Ado About Nothing. Fia is thrilled to join such a talented cast in bringing this show to life. Godspell is Fia's first musical production in over 8 years since getting off of her year tour with Up with People and a lifetime of theatre before that. Fia would like to thank her friends and family and most of all her wildly supportive husband , impromptu accompanist, and forever duet partner, Arndt Saalfeldt, for the endless support that has made this possible for her.



Logan Hayes (Jesus) is thrilled to help bring this production of "Godspell" to life. He most recently directed Thalian Association's production of Nickelodeon's "The SpongeBob Musical", for which he won multiple awards. You may have seen him on stage as "Buddy" in Elf the Musical (TACT), "Mike Costa" in A Chorus Line (TACT), or "George" in The Wedding Singer (TACT). He would like to thank his family, work family, and friends for their constant support. Enjoy the show and remember to SPREAD LOVE! @theloganhayes



Stephen Terry (Ensemble) is excited and grateful to be given the opportunity to share the stage with such a talented group of fun people to put on an equally fun show. He hopes that as you take it day by day, you learn the lesson well that all gifts are good, and beseeches thee to shine your light on the world as we all continue to make this a beautiful city.





Truü Danns (Ensemble) is excited and grateful to be given the opportunity to share the stage with such a talented group of fun people to put on an equally fun show. She hopes that as you take it day by day, you learn the lesson well that all gifts are good, and beseeches thee to shine your light on the world as we all continue to make this a beautiful city.

Kelsey McCrary (Ensemble) is ecstatic to be back in Wilmington performing with Thalian Association! She recently graduated from Meredith College in May with her B.A. in Theatre with a Musical Theatre Concentration. She was most recently seen as Charity Hope Valentine in Meredith College's production of "Sweet Charity". Kelsey would like to accredit her experience performing in Thalian Association's 2018 production of "Godspell" as a huge step in her journey of becoming a performer. She encourages the audience to open themselves to receiving the overarching message of the show: the importance of love, light, community, and acceptance. She wants to thank the entire cast, tech crew, and creative team for their contributions to bringing the show together. Enjoy the show!!!.



Band Members

Denice Hopper - Piano/Conductor

Ben Baldwin - Drums

Justin Lacy - Guitar 1

Madison Mielcarski - Bass

Monroe Wygal - Guitar 1

Crew

Light Board Operator- Reagan Blackburn

Spotlights- Jon Wallin and Lilly Goddard

MUSICAL NUMBERS

ACT ONE

- Tower of Babble.....Ensemble
- Prepare Ye.....Judas and Ensemble
- Save the People.....Jesus
- Day by Day.....Susie
- Learn Your Lessons Well.....Nat
- Bless the Lord.....Kelsey
- All for the Best.....Jesus and Judas
- All Good Gifts.....Zach
- Light of the World.....Mark

ACT TWO

- Learn Your Lessons Well (Reprise).....Rebecca
- Turn Back, O Man.....Kathy
- Alas for You.....Jesus
- By My Side*Yeavonne, Rebecca, Fia, Anna, Kelsey
- We Beseech Thee.....Stephen
- Beautiful City.....Jesus
- On the Willows.....Judas, Kelsey, Zach
- Finale.....All

*written by PEGGY GORDON and JAY HAMBURGER



**Join us for our 2024-2025
Main Stage Season!**

**Young Frankenstein
September 27 - October 6**

**White Christmas
December 13-22**

**A Few Good Men
February 7-16**

**Mary Poppins
April 4-15**

**Legally Blonde
May 16-25**

Main Stage Thalian Hall



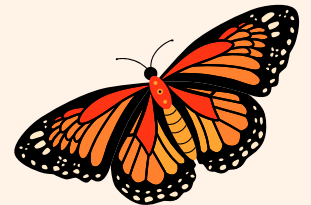
Join us for our 2024-2025 Youth Season!

Six: Teen Edition
September 13- 22



Anastasia
November 15 -24

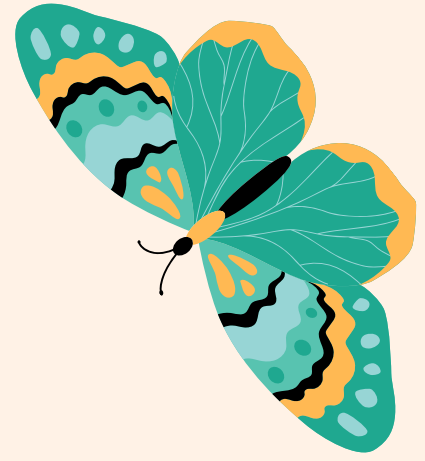
Willy Wonka
January 17-26



Alice in Wonderland
March 7- 16



Fame Jr
April 25- May 4



Special Thanks

to the technical
staff at Kenan
Auditorium

Manuel Fernandez- Technical Director

Owen Sheehan

Ashley Flowers

Ben Cornett

Godspell 2012
Is presented through
special arrangement
with Music Theatre
International (MTI).
All authorized
performance
materials are also
supplied by MTI.
www.mtishows.com

